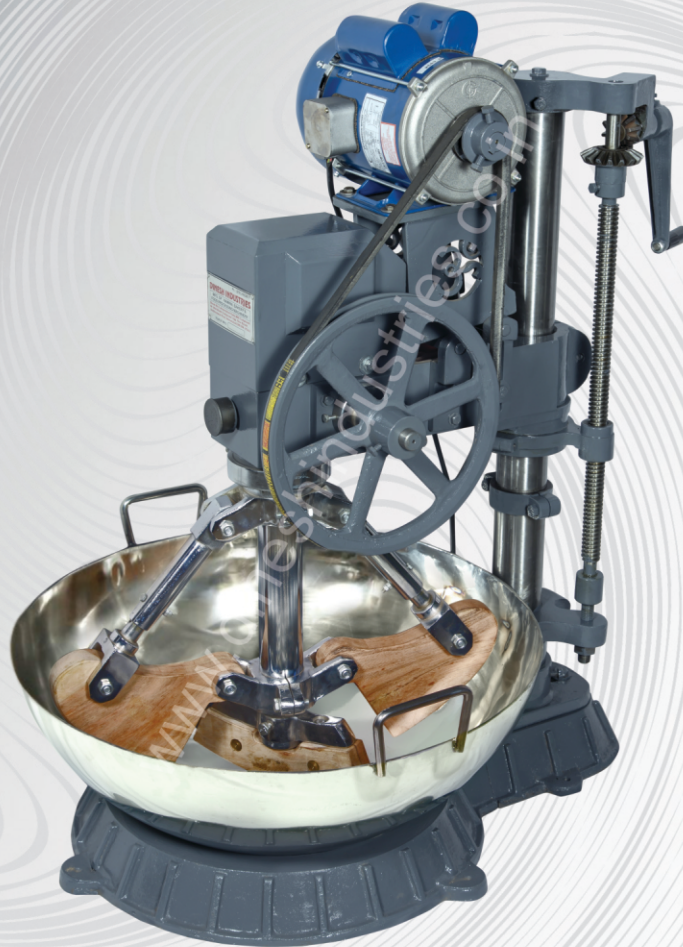




DINESH INDUSTRIES

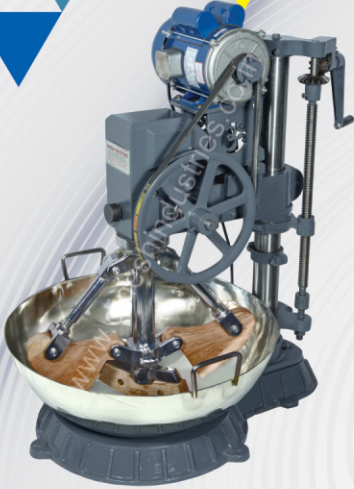
दिनेश इंडस्ट्रीज़



Mfg. : All Type of Food Processing Machinery in

▲ NAMKEEN ▲ SWEETS ▲ HOTEL ▲ BAKERY ▲ CATRING
▲ LODGING ▲ BOARDING ▲ SAVAI ▲ GOLD FINGER

E-mail : dineshind@live.com, sweetsmachines@gmail.com Web. : www.dineshindustries.co.in



▲ KAJU MUSTI MACHINE (MAVA MIXING MACHINE)

काजु मुस्ती मशीन (मावा मीक्ष मशीन)

- Machine are for Sweets for Mixing Color, Best for Sterenty and Sticky Mixing for Dryfruits Sweets and Khoa Mixing.
- 15 Kg. Cap with 2 H.P. Motor.
- Stainless Steel Body is Also Available.
- Size : 37" x 30" **15 Kg. Cap.**
- Hight : 40"
- Machine Weight 210 Kg Approx.

▲ KAJU MUSTI MACHINE (MAVA MIXING MACHINE)

काजु मुस्ती मशीन (मावा मीक्ष मशीन)

- Machine are for Sweets for Mixing Color, Best for Sterenty and Sticky Mixing for Dry Fruits Sweets and Mhoa Mixing.
- 30 Kg. Batch Capacity with 2 H.P. Motor.
- Stainless Steel Body is Also Available.
- Size : 40" x 31" **30 Kg. Cap.**
- Hight : 44"
- Machine Weight 230 Kg Approx.



▲ MAVA MACHINE (KHOA MACHINE)

मावा मशीन (खोआ मशीन)

- Cap. 55 ltr., 110 ltr., 200 ltr.
- This Machine Use For Hot Milk, Khoa, Basundi, Bafri, and many other Sweets.
- Machine Contion 1 hp Moter.
- Machine is in Stainless steel & MS Body.
- Salient Machine With Smooth work.
- Heavyduty Modal.
- L 50" x W 35" x H 39".
- Wight Approximate 250kg.

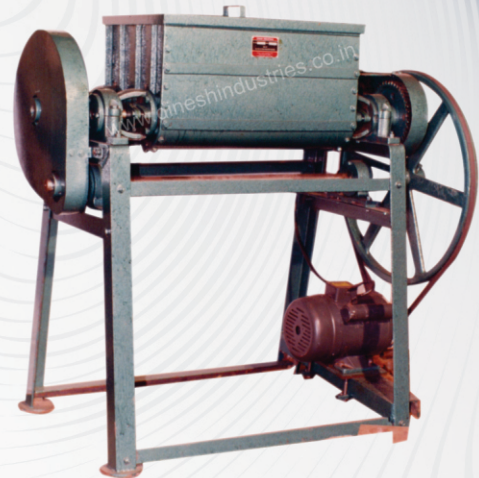


▲ SEV, PAPDI, GANTHIA MACHINE नमकीन मशीन

- Machine use in Papdi, Ghathiya, Ratlami Sev, Tamtam, Fulwadi and All type of dizine Namkeen.
- Stainless Steel. Heavy Duty Body.
- 1.5 H.P. Motor. **(Dai Size 9"1/2).**
- 2 H.P. Motor. **(Dai Size 10"1/2).**
- Machine weight Approx.80 to 90 kg.
- L 48" X W 16" X H 27".

▲ FLOUR KNEADING MACHINE आटा गुंदनेका मशीन

- Easy and Speedy Results.
- Cap. 20 Kg. in 5 minutes.
- Small Size are also Available in 10 kg. with 1 H.P. Motor.
- M/c. for Namkeen, Boarding, School, Hostels, Dharam Shala etc. and all types of flour Kneading.
- H. : 43 Inch, Length : 41" x 21" of 20 kg. cap.



▲ FLOUR KNEADING MACHINE आटा गुंदनेका मशीन

- 40 kg. Cap. with 1.5 H.P. Motor.
- Machine is of Multi Purpose in all type of Mixing in Besan/Menda/Agarbatti etc.
- Heavy Duty 90kg Capacity with 2 H.P. Motor.
- Size 30" x 65" H. 43" (40 kg. Cap.).
- 90 kg Machine weight is Approximate 375 Kg.
- 40 kg Machine weight is Approximate 225 Kg.
- Gear Warentee 7 Years as per Condition.



▲ POTETO PILLER MACHINE

आलू छीलने का मशीन

- 10kg, 20kg, 30kg, Batch Machine Available
- Machine Contains 1 H.P. Motor 20kg.
- Cap. : 100 kg. in 20 Minutes (20 kg Batch)
- Stainless Steel Body.
- H. : 26 Inch, Length : 40" x 30".
- Machine weight Approximate 120 kg.



▲ POTATO WAFFERS CUTTING MACHINE

आलू वेफर कटींग मशीन

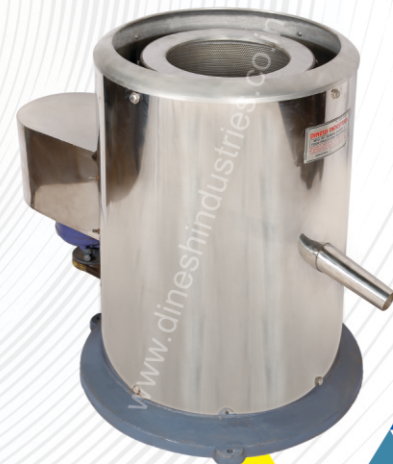
- Potato Cutting Machine for Plane Waffer and Chewda's sali and Raffle type.
- 1 H.P. Motor.
- Easy and Simple Machine
- 350 to 400 kg. per hour.
- Body is in Stainless Steel & **Side Motor Model.**
- Weight 80 kg. Approximate.

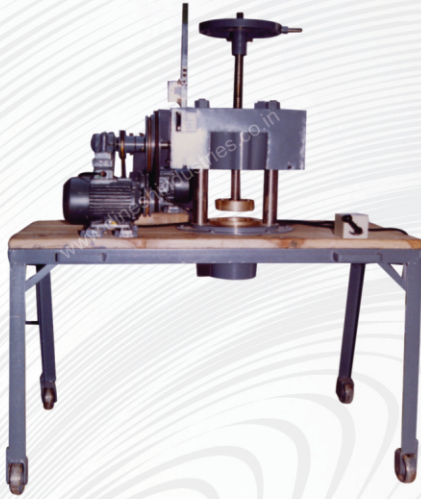
▲ DRAYER MACHINE "OIL EXECTER"

ड्राय मशीन (तेल/पानी अलग नीकालने का)

- Machine Contains 1/2 H.P. Motor.
- 2 size are Available simple and Heavy Duty in Stainless Steel body.
- H. : 32 Inch, Length : 34 x 20 Inch.
- Heavy Duty with 1 H.P. Motor.
- Small M/c weight Approximate 80 to 90 kg.
- 12 kg Batch Model
- 22 kg Batch Model

Chana Dal





▲ NYLON SEV MACHINE

नायलोन सेव मशीन

- Machine Cations two Motor 1 H.P. and 1.5 H.P.
- Nylon Sev, Bikaneri Sev, Agra Type Sev etc.
- H. : 66" Inch, Length : 28" x 50" Inch.

▲ CHANNA PRESSING MACHINE

चना प्रेसींग मशीन

- Machine Use in Channa Mung Green Peas.
- Machine Cations 1.5 H.P. Motor.
- Cap. : 100 kg. in 75 minutes.
- H. : 62" Inch, Length : 42" x 34" Inch.
- Weight Approximate 650 to 700 Kg.



▲ NAMKEEN MIXTURE MACHINE

नमकीन मीक्षर मशीन

- Machine for Namkeen Mixing, Flour Mixing, Masala Mixing, and for Other Dry Item Mixing.
- Machine Cation Crompton Motor Asper Requirements.
- Boul Lenth 3 Feet - 4 Feet - 5 Feet Asper your Requirements.
- Capcity 50kg to 150kg and More.
- Heavy Duty Stanless Steel 304 Body.
- Machine Wight Approx 250kg (4 Feet)
- Approx Lenth 72" x 36" x 50" H



Banana Wafer Cutting Machine



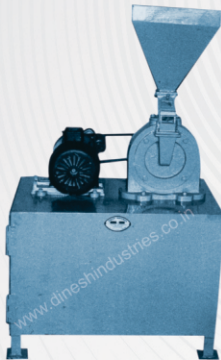
Menda Sawai
Machine



Menda Savai
Machine



Menda Mixture
Machine



Suger Powder
Machine



Flour Sceeing
Machine



Flour Sceeing
Machine

Fullchandbhai L. Panchal



DINESH INDUSTRIES

Block No. 2, Ahmedabad Dying Mill Compound, In Mahalaxmi compound,
B/S. Kalpanabhumi Estate, Opp. Ravi Estate & Torrent Power, Dudheshwar Road,
Ahmedabad-380 004. (Gujarat, India.)

Phone : 079-2563 2677 **Dinesh : (M) 098251 97799 Bhavin : (M) 080009 97799**

E-mail : dineshind@live.com, sweetsmachines@gmail.com

Web. : www.dineshindustries.co.in